



Mitigating Climate Change in Los Angeles

March 27, 2017

Jonathan Parfrey □ Climate Resolve



When you think of Los Angeles . . .











There's another Los Angeles





Fwy
H Hope
St

Public
Storage

month

KACAL
213











An aerial photograph of Los Angeles, California, showing a dense urban landscape with numerous skyscrapers in the downtown area and a complex network of highways and freeways. The image has a semi-transparent, light-colored overlay that serves as a background for the text.

Why do people love LA?

. . . it's the climate.







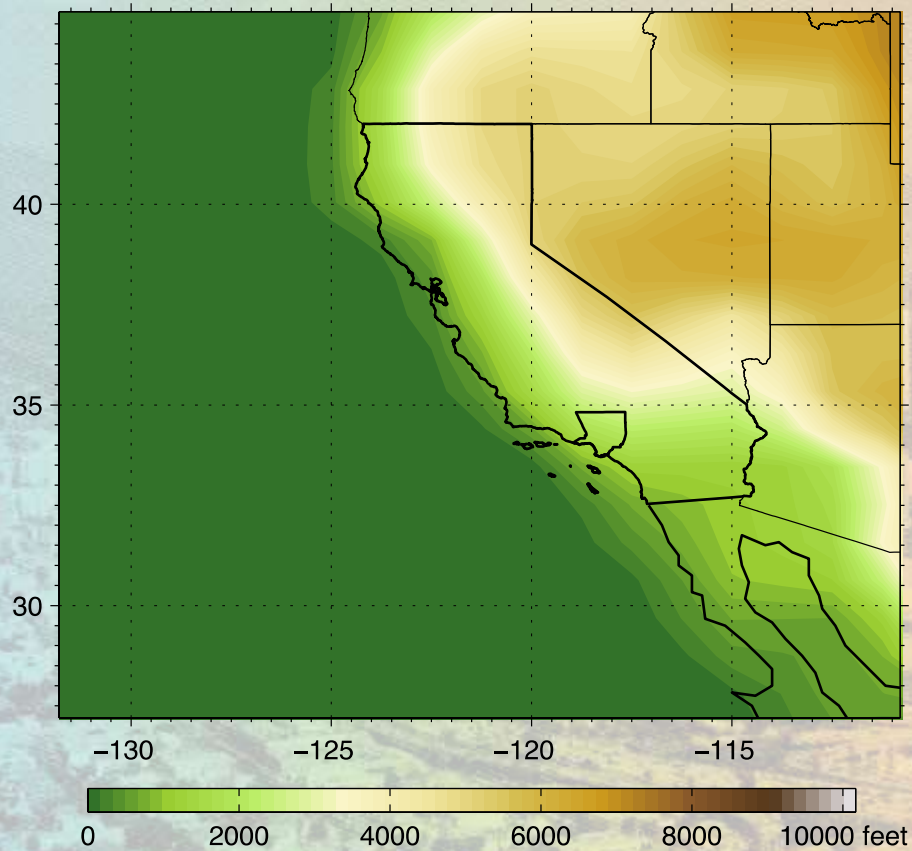




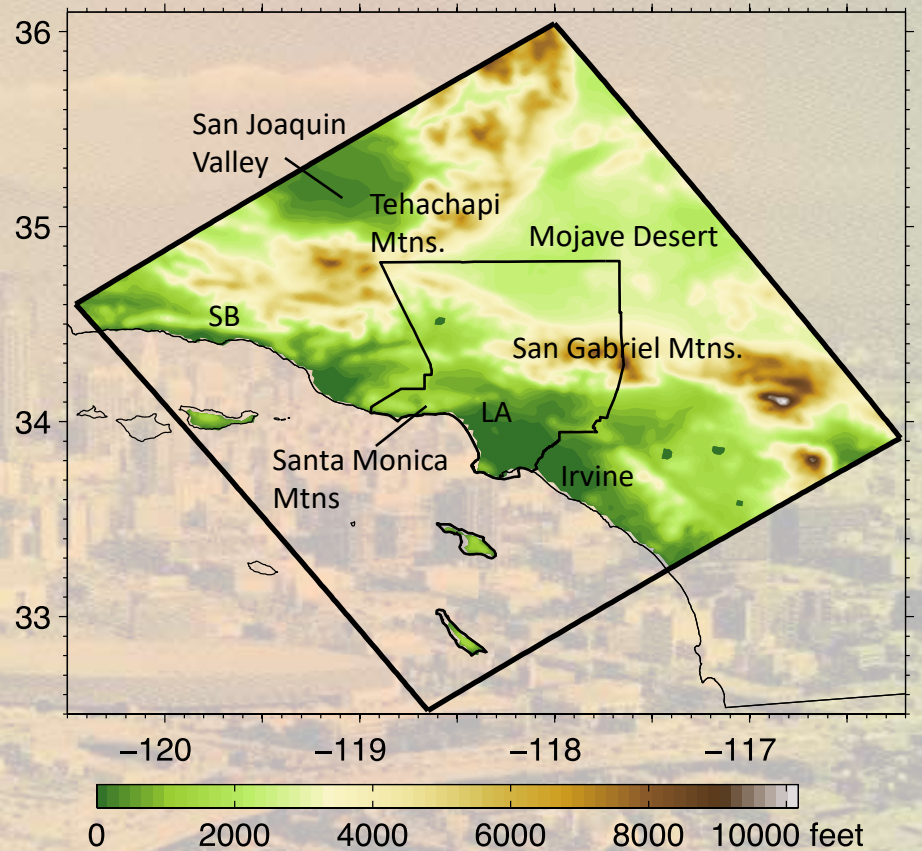


L.A. Future Temperature • 2041-2060

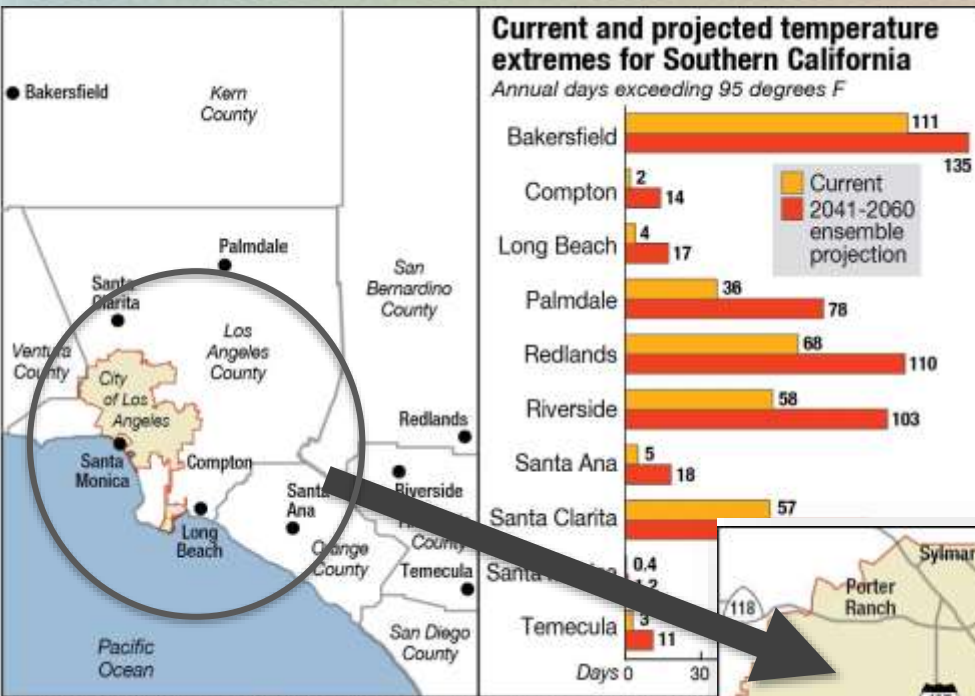




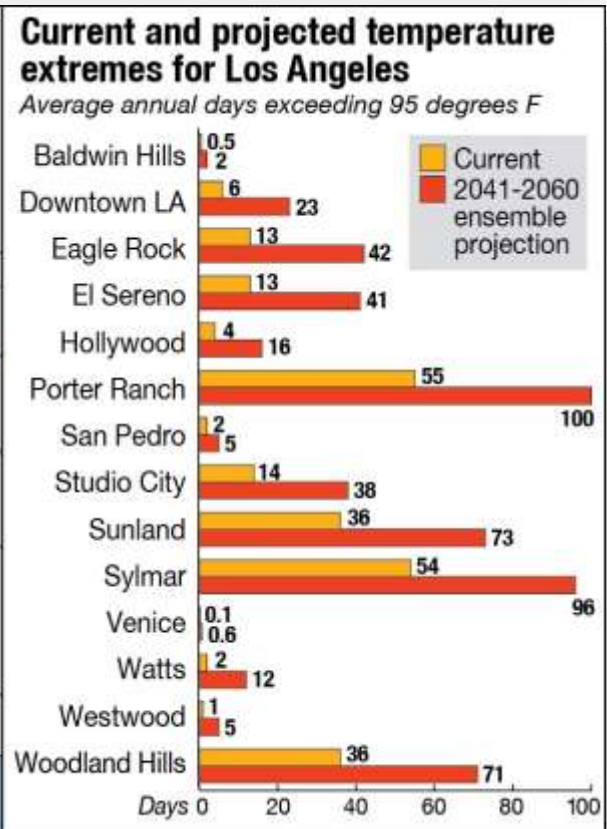
Topography from a typical global climate model (100-200 km)



Topography and coastline are very well represented in the 2 km resolution innermost domain of the regional climate model



Source: UCLA LARC study, 2012; chart based on the mean/average projected by the 18 climate models



Source: UCLA LARC study, 2012; chart based on the mean/average projected by the 18 climate models

Los Angeles Temperature, 2041-2060

- **Coastal areas - 3-4°F**
- **San Fernando & San Gabriel valleys - 4-4.5°F**
- **Mountains and Deserts - 4.5-5.5°**
- **Doubling, tripling or quadrupling extreme heat days**

Rain & Snow in Los Angeles





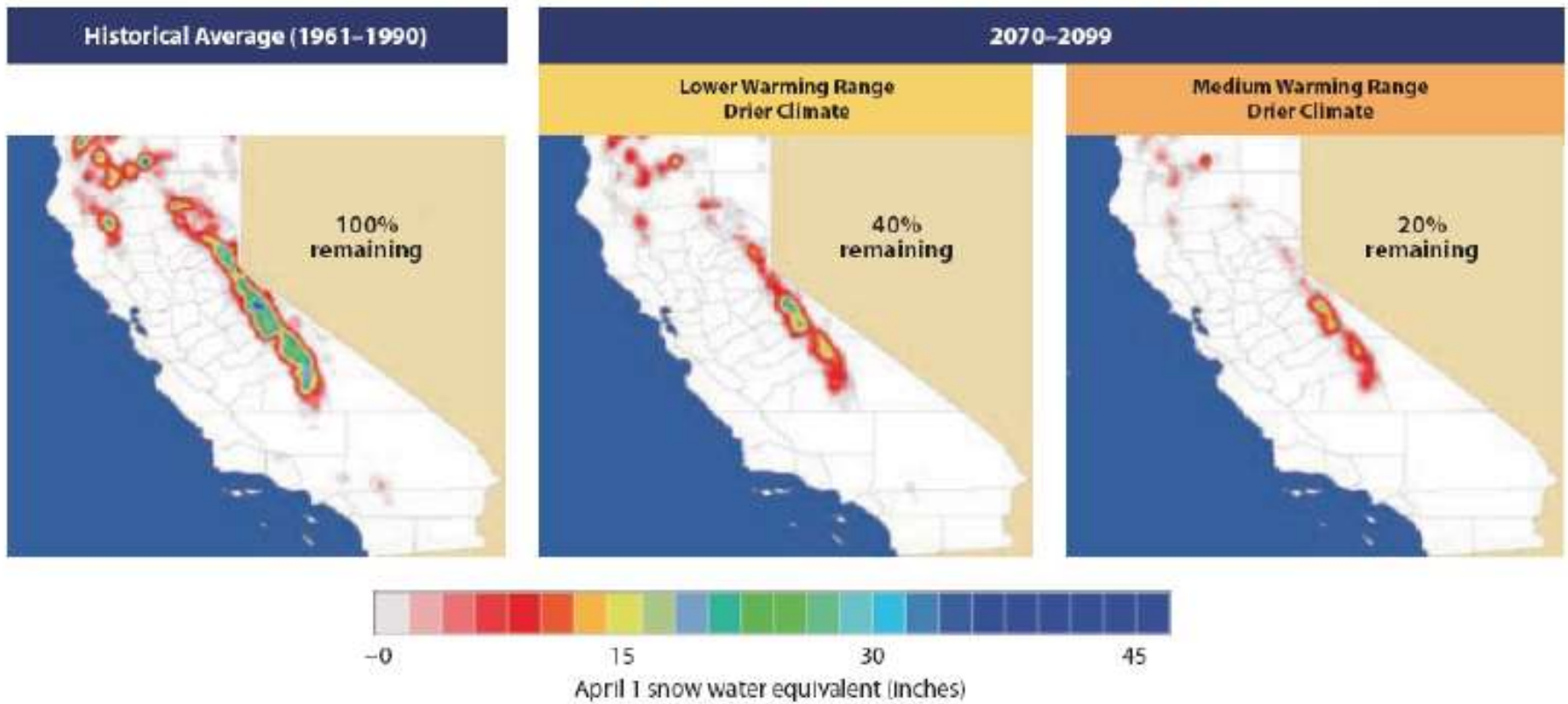






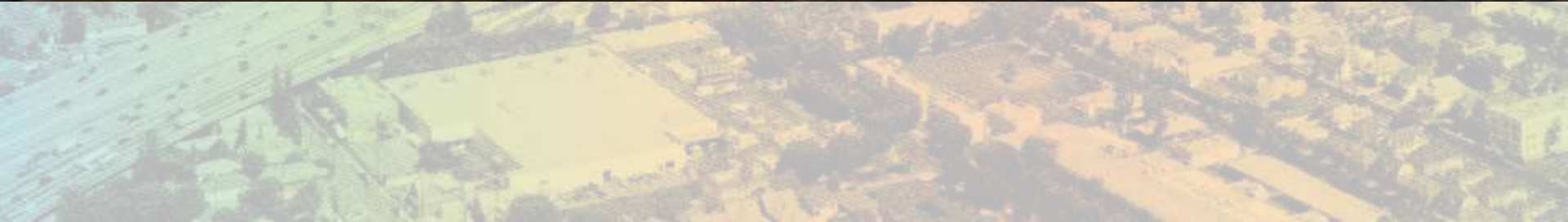
Decreasing California Snowpack

Snow pack acts as a natural reservoir for summer and fall water supply. Its capacity is projected to decrease significantly in a warmer climate.





PREDICTED SNOWFALL IN 2050



Drought . . . then Flood



f t e

LOCAL

Garcetti calls for state of emergency amid concerns that flooding could damage DWP facilities



A winter scene from January near Bishop, Calif. Los Angeles officials are concerned that melting snow along the eastern Sierra Nevada could harm Department of Water and Power facilities. (Brian van der Brug / Los Angeles Times)

In Case You Missed It



40 minutes ago 1 pm

Mitigation Measures

- LA is not LA
- State of California policies largely determines local action on GHG
- City of Los Angeles unique targets and policies
- Local innovations to reach state and local targets



LA is not LA

- City of LA
– 4 million
- County of LA
– 10 million
- SCAG region
– 19 million
- California
– 38 million

State of California - major climate mitigation policies

- AB 1483 (2002) – tailpipe emissions
- AB 32 (2006) – 1990 by 2020
 - lead authority to CARB
 - 60+ policies: cap and trade, lcfs, waste, forestry, ag, etc
- SB 375 (2008) – land use & transportation planning
- SB 32 (2016) – 40% below 1990 by 2030

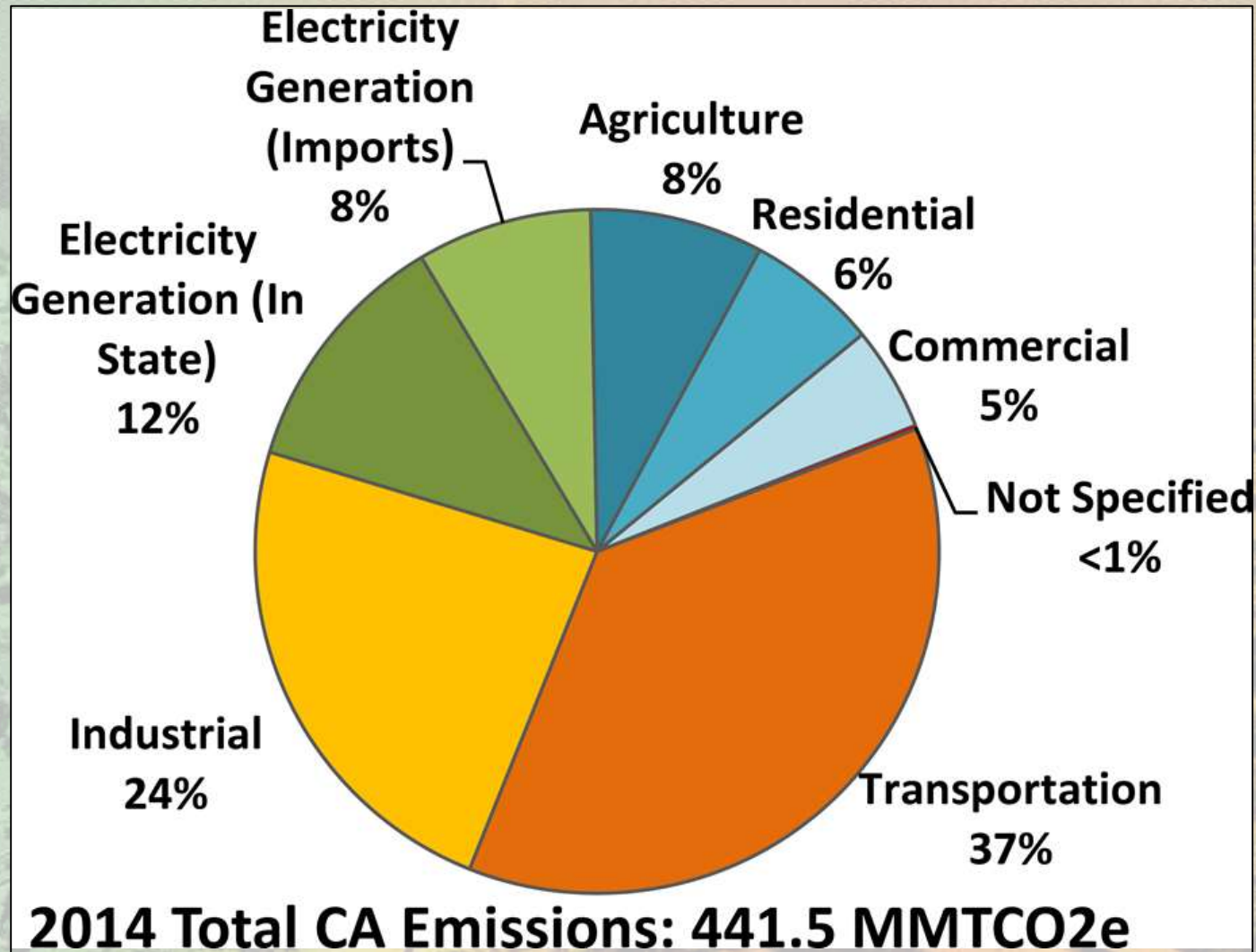
State of California

Energy Sector -

Renewables Portfolio Standard

- SB 107 (2006) - 20% by 2010
 - applied only to private Investor Owned Utilities
- SB X1-2 (2011) - 33% by 2030
- SB 350 (2015) - 50% by 2030
- pending: SB 584 (2017)
 - 50% by 2025
 - 100% by 2045

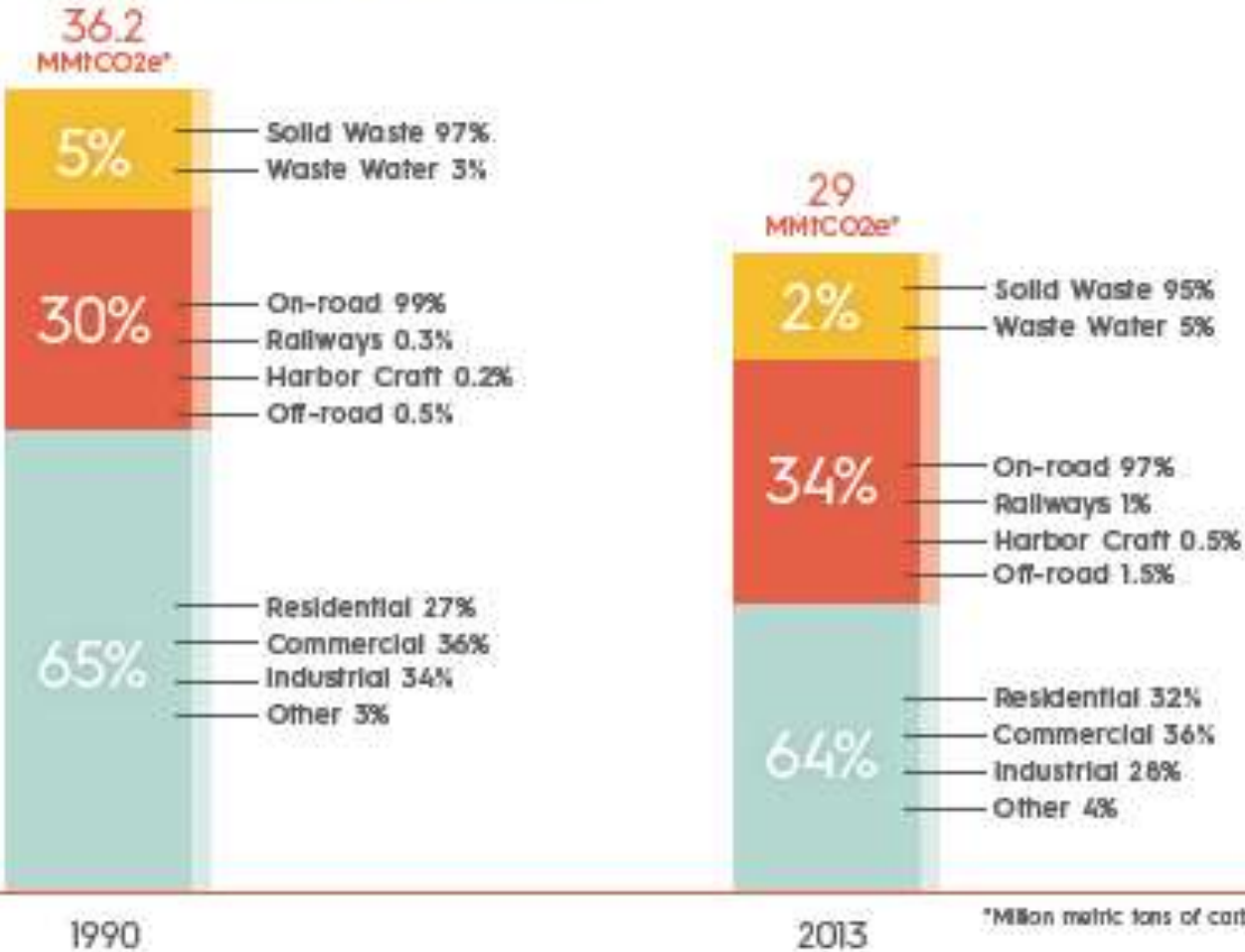
State of California GHG by sector (2014)



City of Los Angeles communitywide inventory

L.A.'s GHG Emissions by Sector

■ Energy ■ Transportation ■ Waste

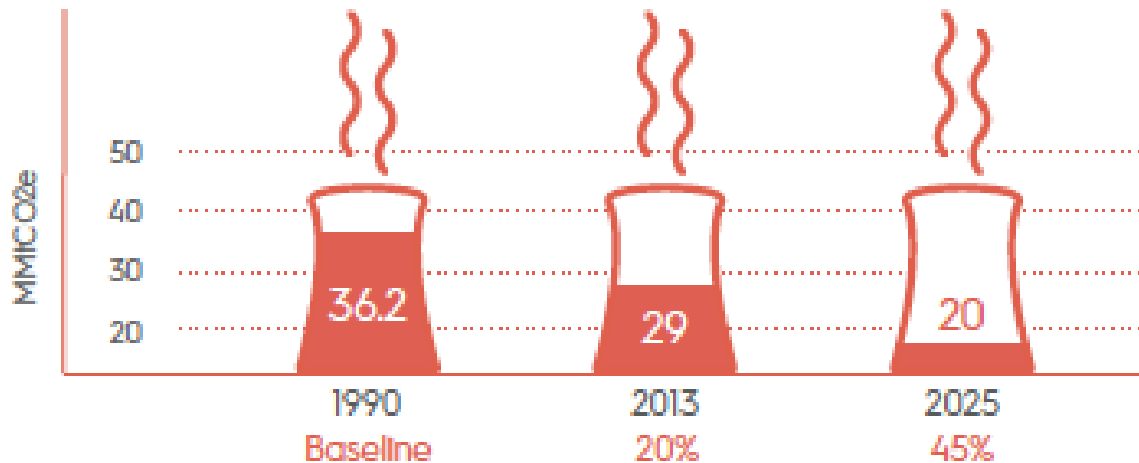


*Million metric tons of carbon dioxide equivalent

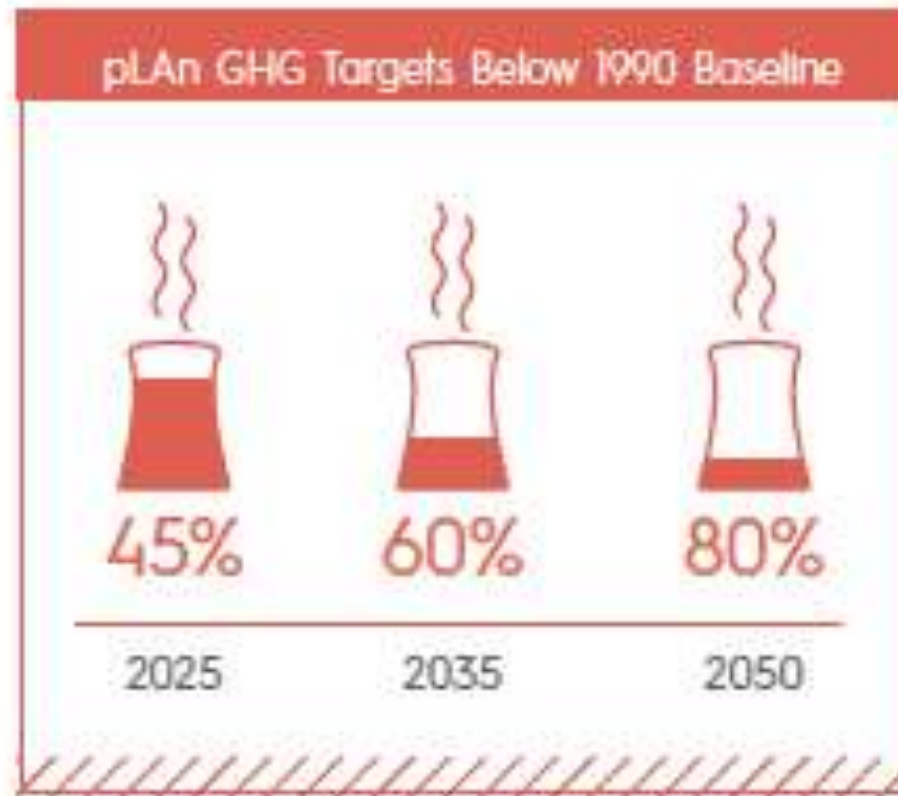
City of Los Angeles

baseline and projections for GHG reduction

L.A.'s 1990 Baseline, 2013 GHG Emissions, and 2025 pLAN GHG Emissions Target



City of Los Angeles targets for GHG reduction



source: Sustainable City pLAn

Innovations

An aerial photograph of a city, likely Los Angeles, showing a complex multi-level highway interchange in the foreground and a large stadium (SoFi Stadium) in the middle ground. The city skyline with various skyscrapers is visible in the background under a hazy sky.

- Transportation
- Built environment
- Waste
- Collaboration

CicLAvia



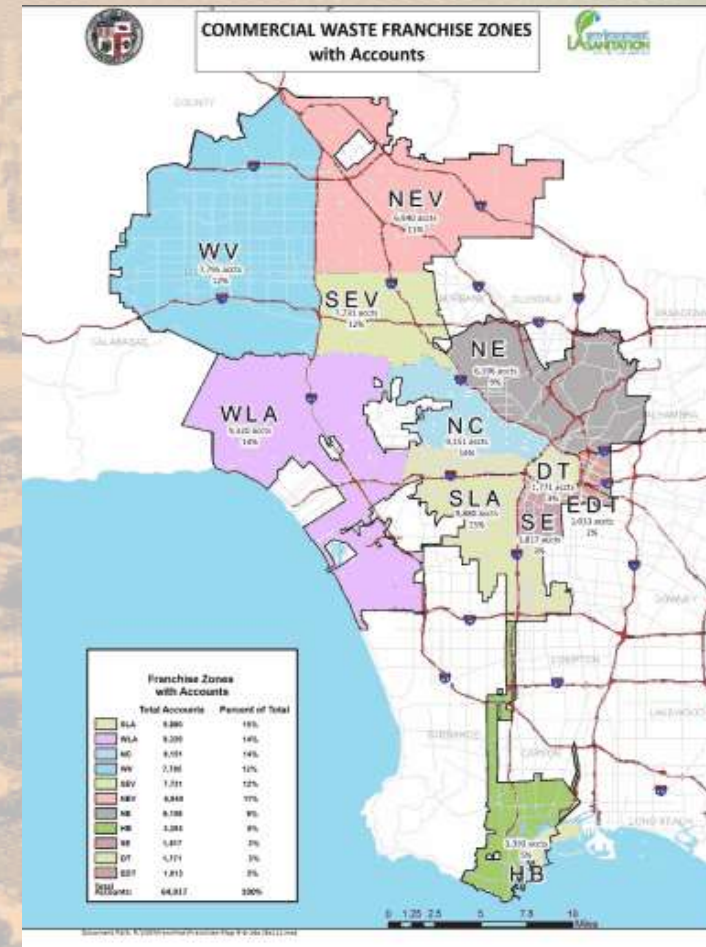
LAANE / Villaraigosa: Clean Truck Program

- L.A./Long Beach Ports: 40% of all container import/exports in the U.S.
- The nation's supply chain runs thru L.A.
- Largest source of air pollution in region
- Labor / environmental coalition
- 2008 policy: franchises awarded by setting price and performance metrics
- **Environmental benefits:** cleaner trucks; clean diesel, natural gas, hydrogen fuel cell and electric trucks
- **Labor benefits:** teamsters can organize a franchise, living wage



LAANE / Villaraigosa / Garcetti: Don't Waste L.A.

- April 2014 – City of Los Angeles adopts *Zero Waste LA Franchise System*
- **Environmental benefits:** waste diverted via commercial and multi-family; fewer trucks on the street
- **Labor benefits:** franchise allows for Teamsters organizing
- Dec 2016 – City of Los Angeles awards seven firms to have exclusive pickup in eleven “wastesheds.”
- California law requires cities to divert 75% of solid waste from landfills by 2020. The city's own goal is to be a zero waste city by 2030.



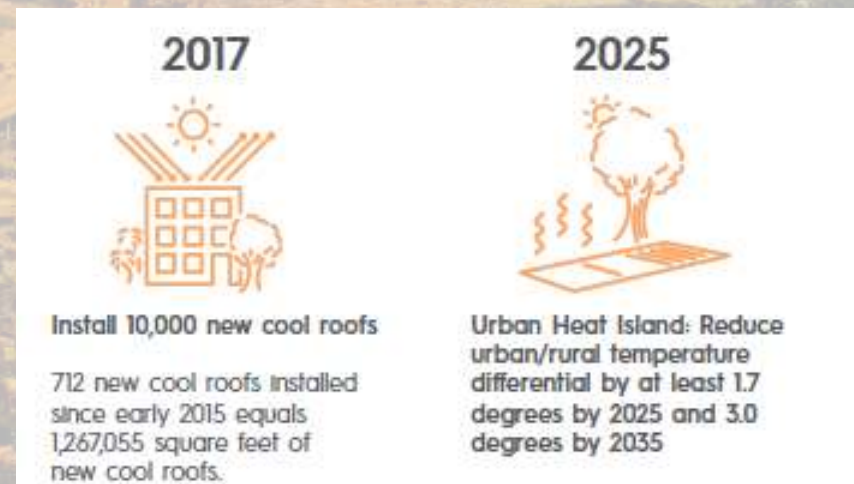
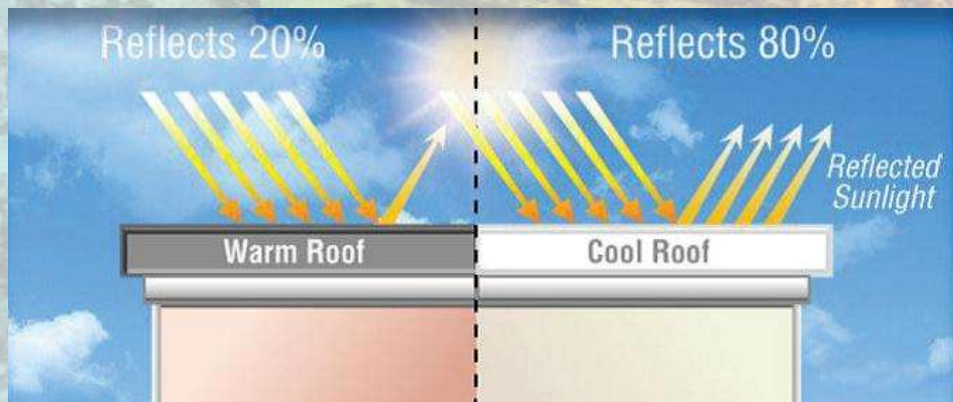
LAANE / Villaraigosa / Garcetti: RePower LA

- Energy efficiency target: State of California requires utilities:
 - 10% reduction in projected load by 2020
 - applies only to Investor Owned Utilities
- Local organizing moved LADWP target to 15% by 2020
- IBEW Local 18 - Utility Pre-Craft Trainee program
- New: community solar



Climate Resolve / cool roofs

- 2012 – LADWP rebate on cool roofing material
- 2014 – City of Los Angeles building code update: residential buildings must use cool roofing material
- 2015 – City of Los Angeles sustainability pLAN
 - UHI targets
 - 1.7°F by 2025
 - 3°F by 2035



Metro

- Enormous public investment in transit
- California revenue measures require 2/3rds
- 2008 – Measure R - \$40 Billion over 30 years
- 2016 – Measure M - \$120 Billion over 40 years
- MoveLA & Climate Resolve coalitions
- Next step: SCAQMD



Net Zero Development

NET ZERO  NEWHALL

[Overview](#)

[Sustainability](#)

[Supporting Our Economy](#)

A pioneering endeavor to combat climate change and protect natural resources while creating new jobs and relieving California's housing shortage.

[SHOW YOUR SUPPORT](#)

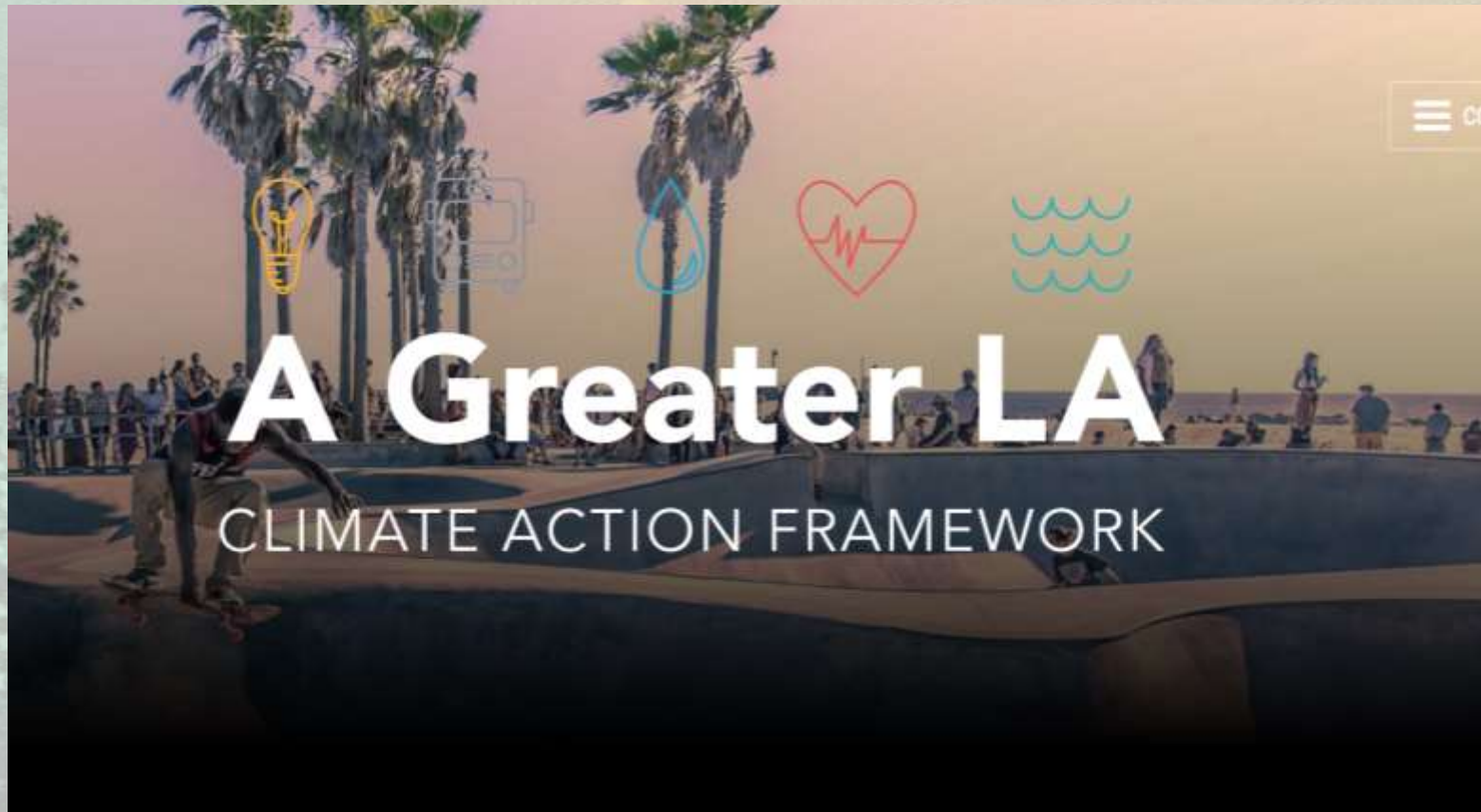


LA Regional Collaborative for Climate Action

An aerial photograph of Los Angeles, California, showing a dense urban landscape with numerous skyscrapers and a complex network of highways. The image is overlaid with a semi-transparent blue and green gradient, which is darker on the left side and lighter on the right, creating a sense of depth and atmosphere.

- Major players in the region
 - County of Los Angeles
 - City of Los Angeles
 - SCAG
 - Metro
 - Many more
- Products
 - Landscape
 - Energy & water mapping
 - Framework

LARC Framework: www.climateaction.la



- Recent revelations and new direction . . .

Jonathan Parfrey
Executive Director, Climate Resolve

jparfrey@climateresolve.org
(213) 634-3790 x101

