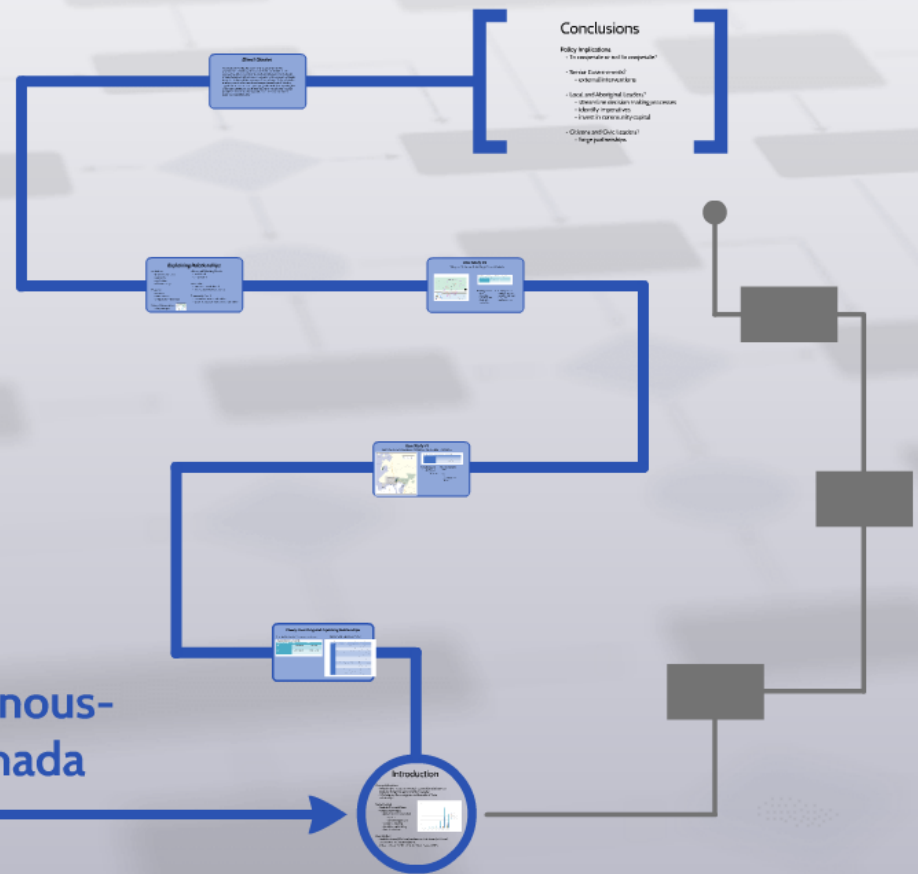


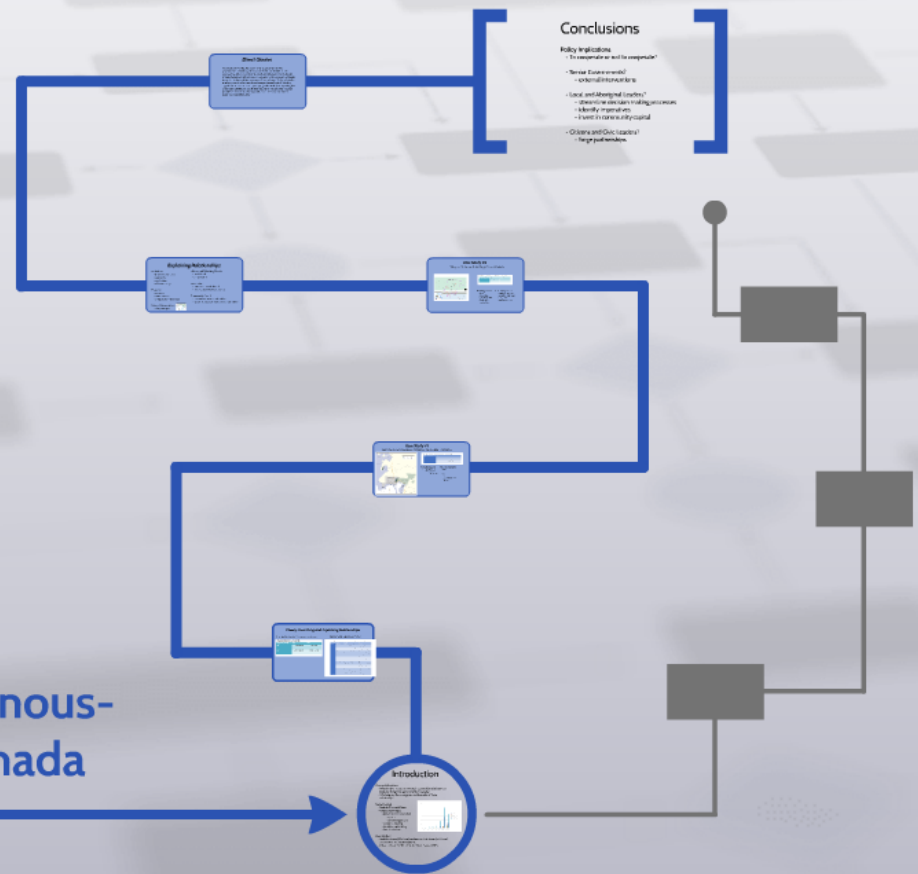
# A Quiet Evolution: The Emergence of Indigenous-Local Intergovernmental Partnerships in Canada

Christopher Alcantara  
Associate Professor  
Department of Political Science  
The University of Western Ontario  
29 May 2017



# A Quiet Evolution: The Emergence of Indigenous-Local Intergovernmental Partnerships in Canada

Christopher Alcantara  
Associate Professor  
Department of Political Science  
The University of Western Ontario  
29 May 2017



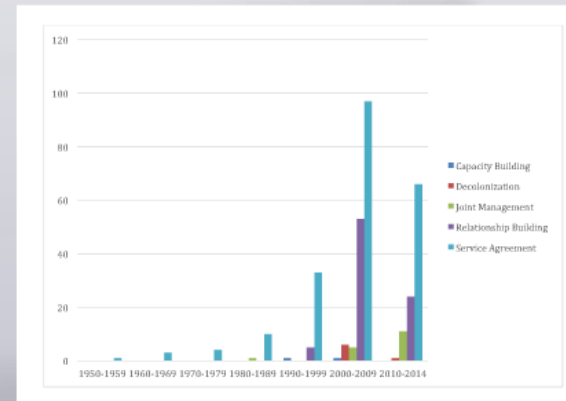
# Introduction

## Research Questions

- What kinds of intergovernmental relationships exist between local and Indigenous governments in Canada?
- What explains the emergence and character of those relationships?

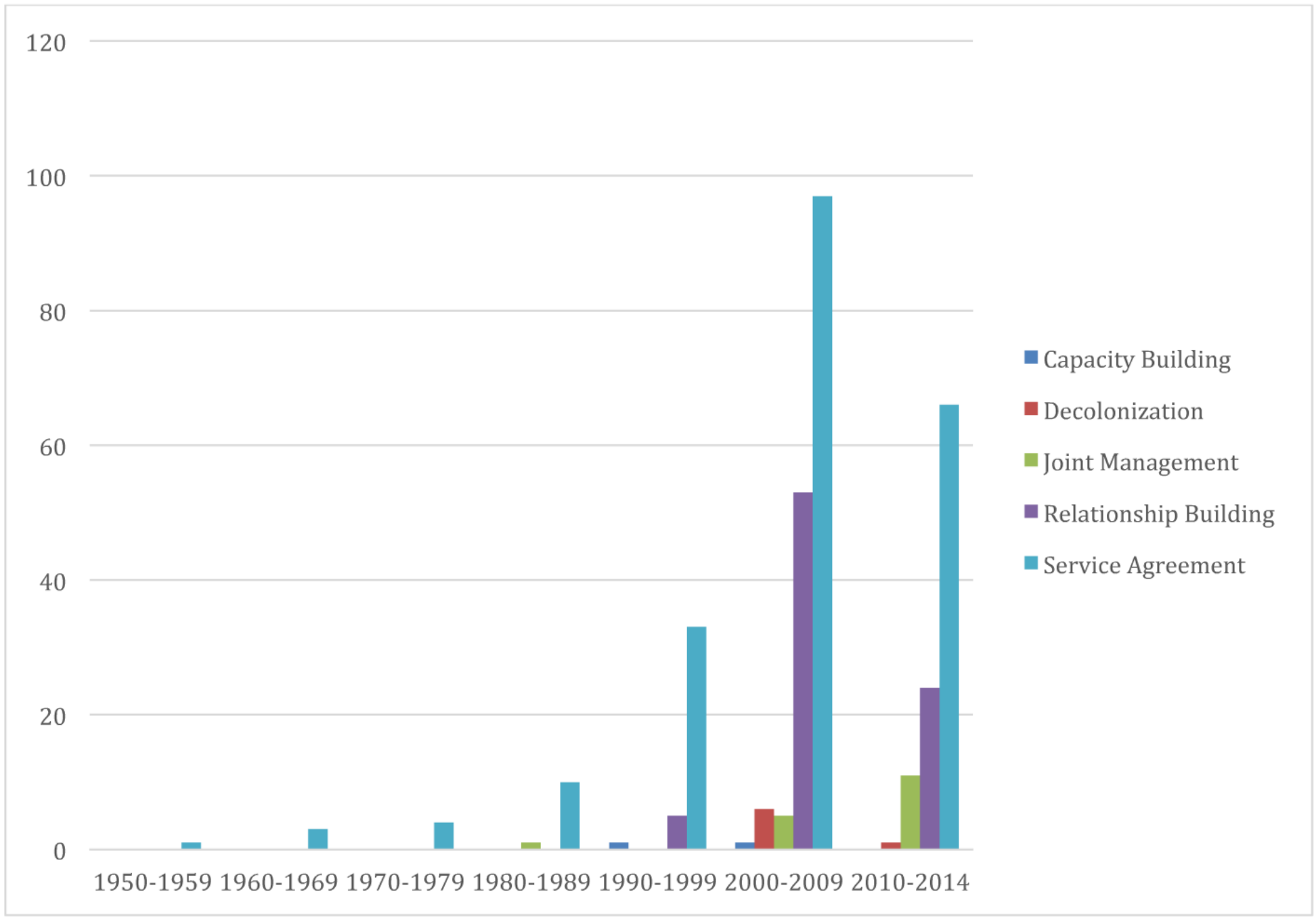
## Some Context

- Federal/Provincial Focus
- 4 Agreement Types
  - Jurisdictional Negotiation
    - service
    - joint management
  - Capacity Building
  - Relationship Building
  - Decolonization



## Case Studies:

- Sault Ste. Marie (SSM) and Batchewana First Nation (BFN) and Garden River First Nation (GRFN)
- Village of Teslin (VOT) and Teslin Tlingit Council (TTC)



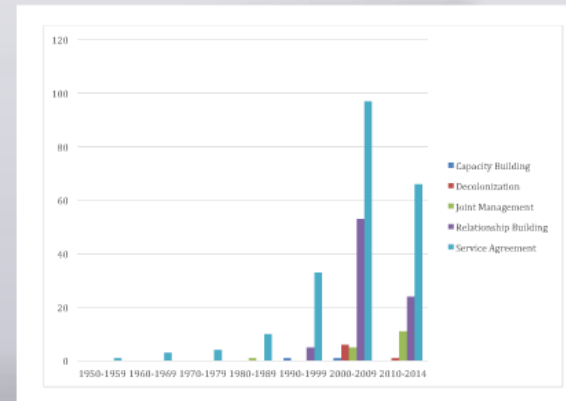
# Introduction

## Research Questions

- What kinds of intergovernmental relationships exist between local and Indigenous governments in Canada?
- What explains the emergence and character of those relationships?

## Some Context

- Federal/Provincial Focus
- 4 Agreement Types
  - Jurisdictional Negotiation
    - service
    - joint management
  - Capacity Building
  - Relationship Building
  - Decolonization



## Case Studies:

- Sault Ste. Marie (SSM) and Batchewana First Nation (BFN) and Garden River First Nation (GRFN)
- Village of Teslin (VOT) and Teslin Tlingit Council (TTC)

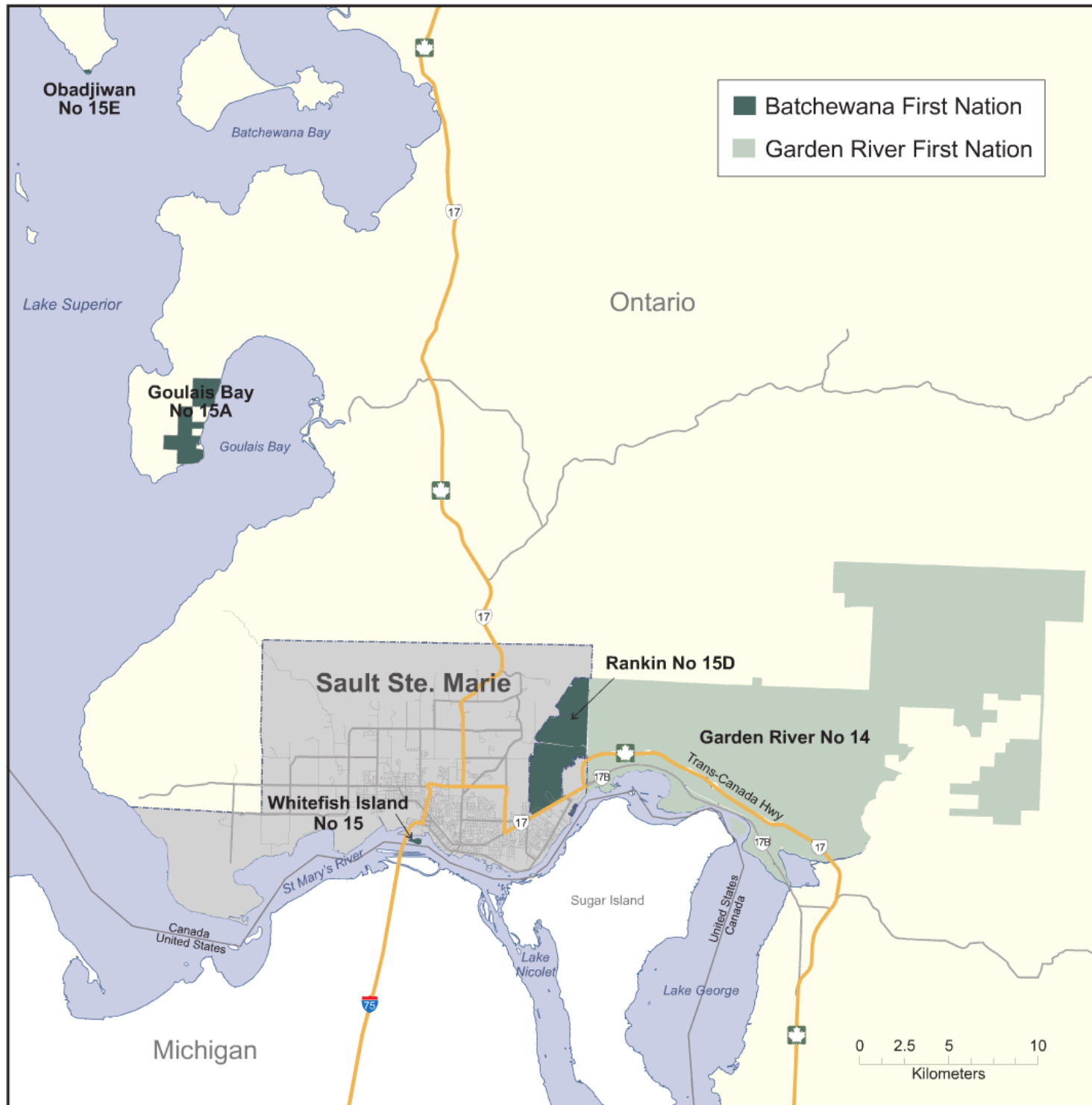
## Classifying Relationships: Engagement and Intensity

A typology of Indigenous-Local relationships

Engagement/Intensity	High	Low
High	Strong Synergy	In the Loop
Low	Agreement Centred	Business As Usual

Table 1: A Summary of the elements of the theoretical framework and some selected examples

	Factors	Definition	Examples
<b>Capacity</b>	Institutions	The rules and norms that govern decision-making processes	Executive autonomy; Council autonomy; Legal status of Indigenous governments.
	Resources	The means available to engage in collaboration.	Financial resources, but also time, expertise, staffing, and infrastructure.
	External Interventions	Actions by other (senior) levels of government.	Direct intervention through involvement in agreements, or indirect intervention through policy changes that affect incentives, capacity, etc.
	History	The history of relationship between communities.	Successful partnerships in the past may encourage new partnerships in the future. Bad blood can sour relations.
	Polarizing Events	Sudden events (endogenous or exogenous) that change the incentive structures of actors.	Natural disasters, perceived slights, the entrance (or exit) of a key actor.
	Imperative	The perception of a shared problem and the need for a collaborative solution.	The perception of shared (although not equal) benefit from cooperation is essential.
	Community Capital	Shared civic identity – understanding that despite differences the two (or more) communities are part of a shared region. Social integration.	Integration across the regional workforce, diversity in the leadership of civic organizations. The presence of leaders that champion the shared region.
	<b>Willingness</b>		



Table

Eng  
High

Low

### Format

- SS
- SS
- se



## First Nations, Garden River First Nation

Table 3: Typology of Garden River and Batchewana relations with Sault Ste. Marie

Engagement/Intensity	High	Low
High		
Low		Garden River Batchewana

### Formal Agreements

- SSM + GRFN = 3
- SSM + BFN = 9
- service agreements

### Informal Agreements

- None

### Issues

- bus
- consent (projects)
- highway

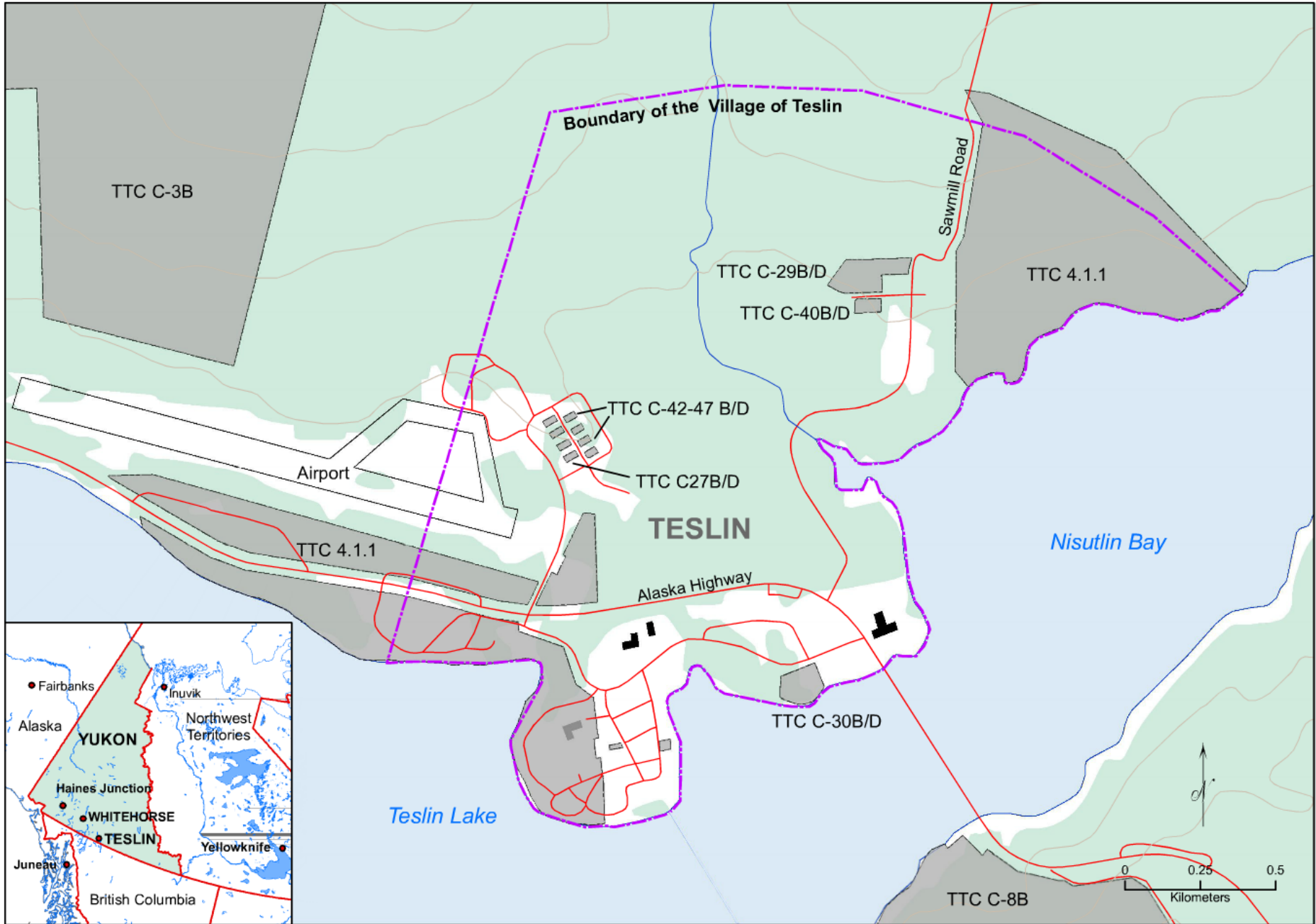


Table x.2: Typology of Teslin Tlingit Council's Relationship with Village of Teslin

Engagement/Intensity	High	Low
High	Teslin Tlingit Council and Village of Teslin	
Low		

## Formal Agreements

- MOU
- Sewer Line
- Skateboard Park
- Teslin ICSP
- Recreation

## Informal Agreements

- municipal services
- boundary expansion
- lobby YTG
- land use planning

# *Explaining Relationships*

## Institutions

- different structures
- autonomy
- legal status
- modern treaty

## Resources

- bus route
- staff turnover
- comparative advantage

## External Interventions

- Hwy Overpass



## History and Polarizing Events

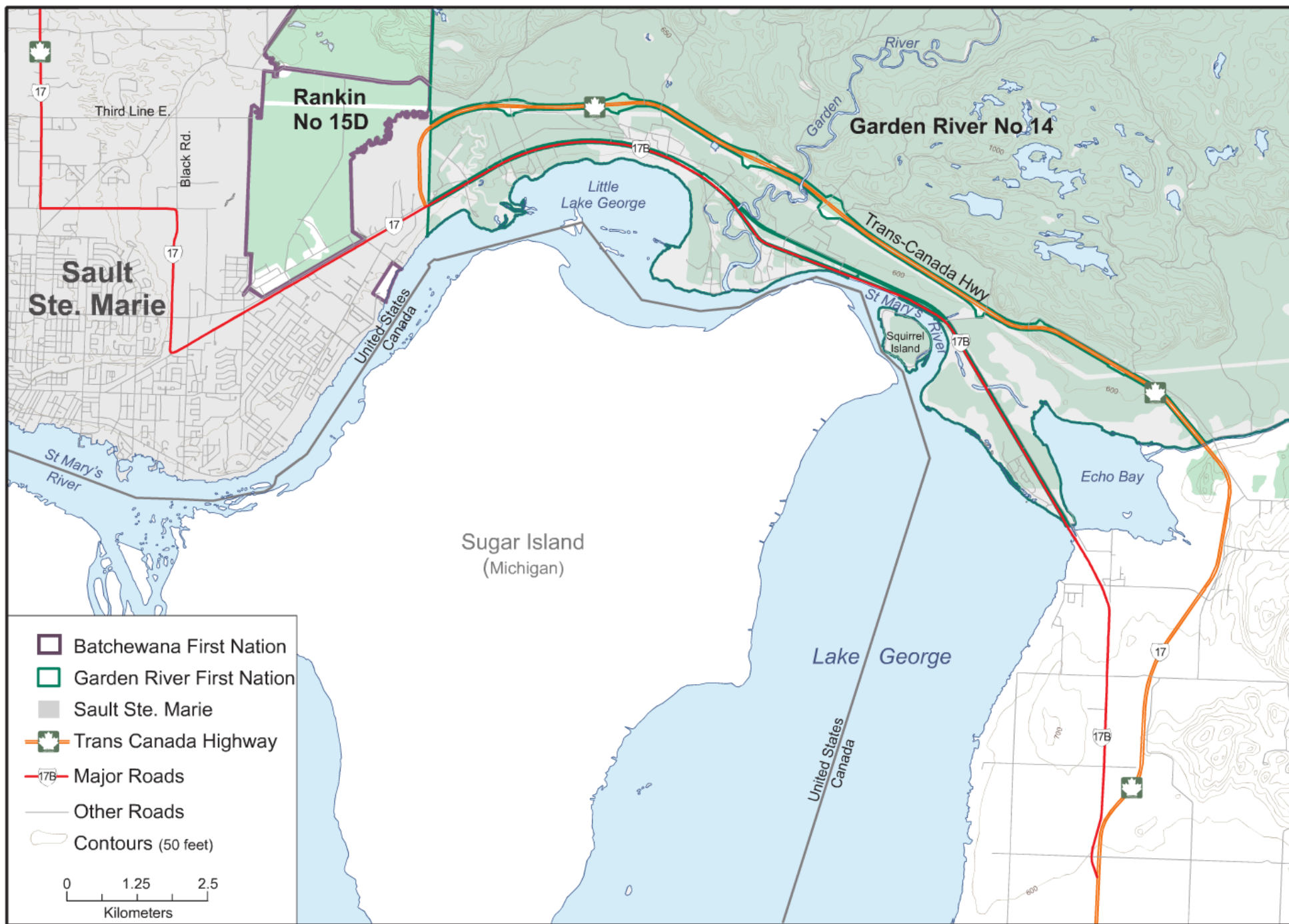
- unpaid bill
- cooperation

## Imperative

- low-level, needs based
- necessary and advantageous

## Community Capital

- racism and weak relationships
- social integration and strong relationships



# *Explaining Relationships*

## Institutions

- different structures
- autonomy
- legal status
- modern treaty

## Resources

- bus route
- staff turnover
- comparative advantage

## External Interventions

- Hwy Overpass



## History and Polarizing Events

- unpaid bill
- cooperation

## Imperative

- low-level, needs based
- necessary and advantageous

## Community Capital

- racism and weak relationships
- social integration and strong relationships

# Conclusions

## Policy Implications

- To cooperate or not to cooperate?
- Senior Governments?
  - external interventions
- Local and Aboriginal Leaders?
  - streamline decision making processes
  - identify imperatives
  - invest in community capital
- Citizens and Civic Leaders?
  - forge partnerships



# A Quiet Evolution: The Emergence of Indigenous-Local Intergovernmental Partnerships in Canada

Christopher Alcantara  
Associate Professor  
Department of Political Science  
The University of Western Ontario  
29 May 2017

